

USB to Serial Cable

User Manual

Ver. 1.00

All brand names and trademarks are properties of their respective owners.

Overview

The USB to Serial Cable provides a simple and easy way to connect Universal Serial Bus and Serial Port interface. With the USB properties of plug and play & hot swap, end users can easily connect any serial devices to computer via the cable. It is the most convenient way to connect cellular phone, modems, ISDN terminal adapter and other serial peripherals. The software driver is well written that most serial peripherals can be configured as if they were connected to the conventional serial ports without any firmware or hardware changes.

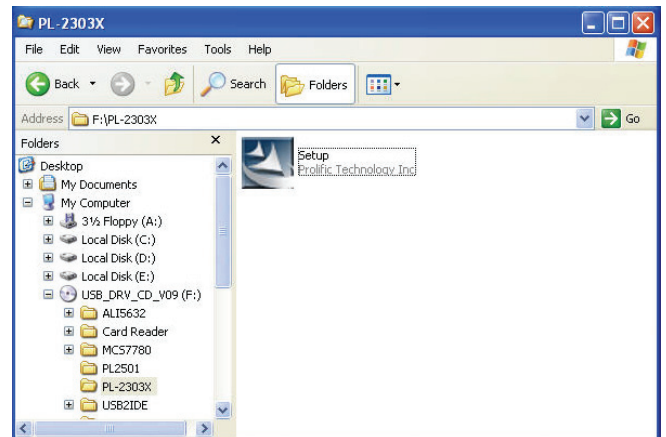
Features

- Chipset: PL2303X
- Connectors: 1 x USB Type A Connector
1 x DB9 Male Connector
- Length: 1.5m (end-to-end)
- Bandwidth: over 1Mbps transfer rate
- Fully compliant with Universal Serial Bus Specification Version 1.1
- Supports RS232 serial interface
- Supports remote wake-up and power management
- Supports automatic handshake mode
- Bus Powered from either USB port
- File synchronization
- Supports Windows 98SE, Windows ME, Windows 2000 & Windows XP, Linux Kernel V2.4 and later

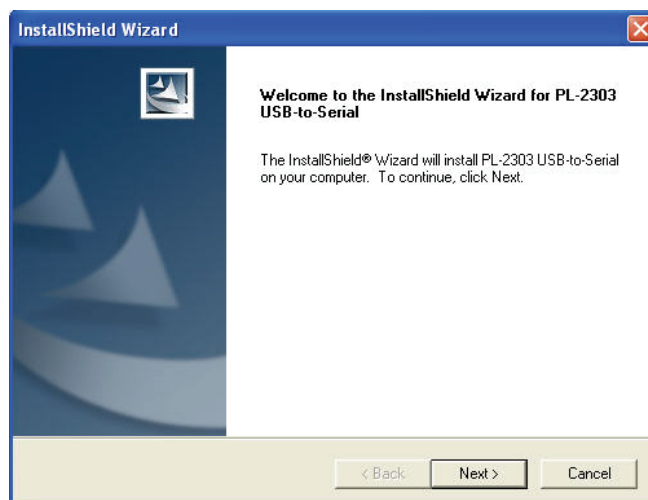
Driver Installation

Windows XP

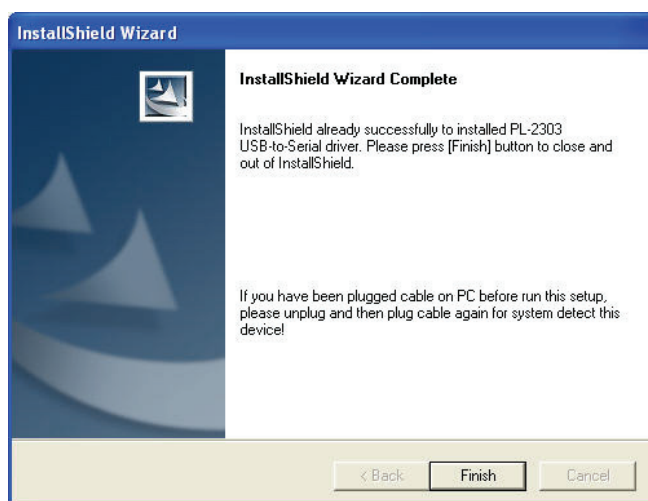
1. Locate the *F:\PL2303X* and double click *Setup.exe* (Where F is CD-ROM)



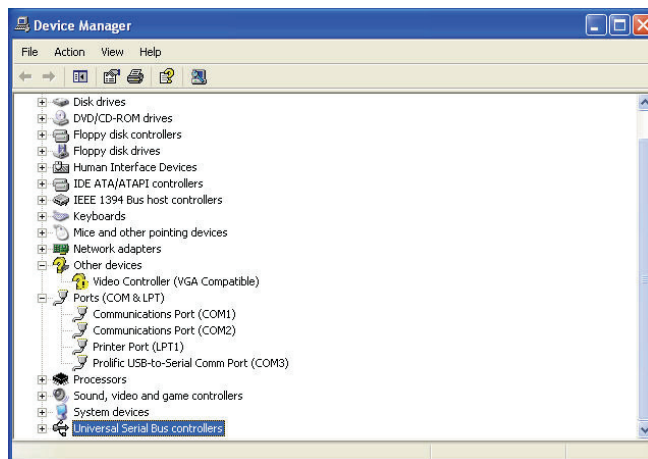
2. Select **Next** to continue installation.



3. Click **Finish**.



4. If the driver is installed successfully, you will see the following devices under Device Manager:

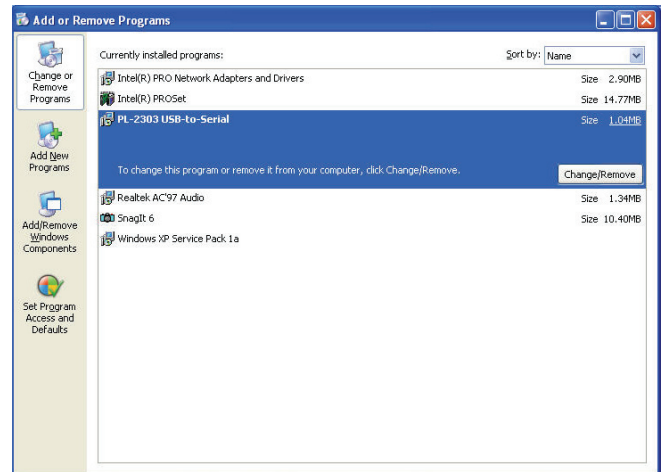


Uninstalling the Device Driver

It is easy to uninstall the USB to Serial device driver. You have three selections uninstall the PL-2303 driver:

- ◆ Run the InstallShield Setup “PL-2303 Driver Installer.exe” program again
- ◆ Run Start → Programs → PL-2303 USB-Serial Driver → Uninstaller
- ◆ Control Panel → Add or Remove Programs → PL-2303 USB-to-Serial

1. The InstallShield Wizard will appear and will let you choose if you want to reinstall the driver, uninstall the driver or exit the wizard. Select to Uninstall driver, and then click **Next** to continue.



2. Click Finish to restart the computer.



Windows 9x

The path of the driver is F:\PL2303X\Setup.exe

Windows 2000

The path of the driver is F:\PL2303X\Setup.exe

Windows ME

The path of the driver is F:\PL2303X\Setup.exe